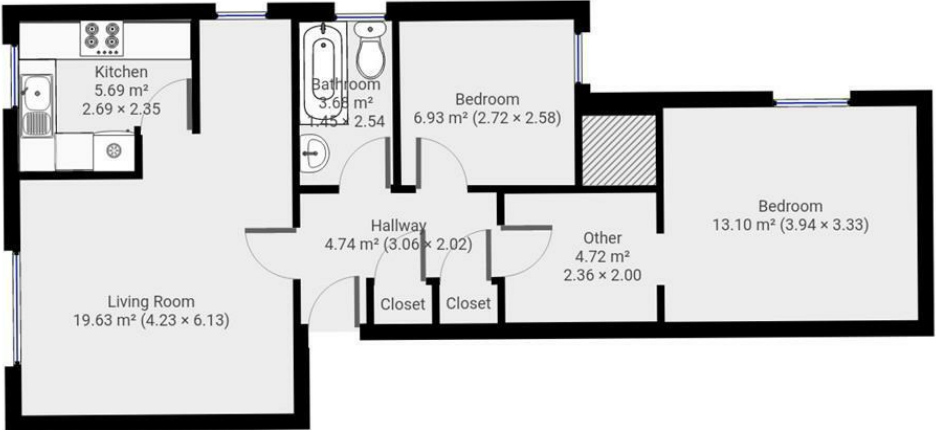


19 Shetland House Pioneer Way, Watford, WD18 6SF  
Asking price £300,000  
Council Tax Band: C



This newly decorated, larger than average two bedroom apartment situated in this popular development off Scammell Way, with easy access to the M1, M25 and A41. Comprising of Living room, kitchen, two double bedrooms and family bathroom.

This popular development is located close to the hospital and Watford Town Centre offering many amenities including the Intu Shopping Centre, IMAX cinema, bowling, several theatres, and numerous restaurants.



Whilst every attempt has been made to ensure accuracy of this floor plan, measurements of doors, windows, rooms are approximate. For identification purpose only. Not to Scale. Copyright to Urban Keys 2020



19 Shetland House Pioneer Way  
 Watford  
 WD18 6SF  
 0208 004 0045  
 admin@urbankeys.co.uk  
<https://urbankeys.co.uk/>

Energy Efficiency Rating		Current	Potential
<i>Very energy efficient - lower running costs</i>			
(92 plus)	A		
(81-91)	B		
(69-80)	C		77
(55-68)	D	60	
(39-54)	E		
(21-38)	F		
(1-20)	G		
<i>Not energy efficient - higher running costs</i>			
<b>England &amp; Wales</b>		EU Directive 2002/91/EC	